



**RESTAURANT
SPACE FOR LEASE**

VERGE

16-20 MEDFORD ST
SOMERVILLE, MA

3,360 SQ. FT.
Delivery Date: Q3 2025

CORBETT
Restaurant Group

Space Highlights

CORBETT
Restaurant Group



- 3,360 sq feet
- 15 ft. ceilings
- Concrete slab on grade
- Conveniently located nearby Union Square and Lechmere T stops
- Ground Floor Space in Luxury Residential Development
- Approximately 80 seats

Area Highlights

CORBETT
Restaurant Group



A prime opportunity awaits in the vibrant intersection of Somerville and Cambridge, at the nexus of Boynton Yards and Union Square. Nestled within a four-story mixed-use development comprised of 50 luxury residential apartments above, this space offers a blend of residential luxury and commercial allure. The restaurant space itself, spanning 3360 square feet, exudes an undeniable hipness characteristic of its surroundings.

CORBETT

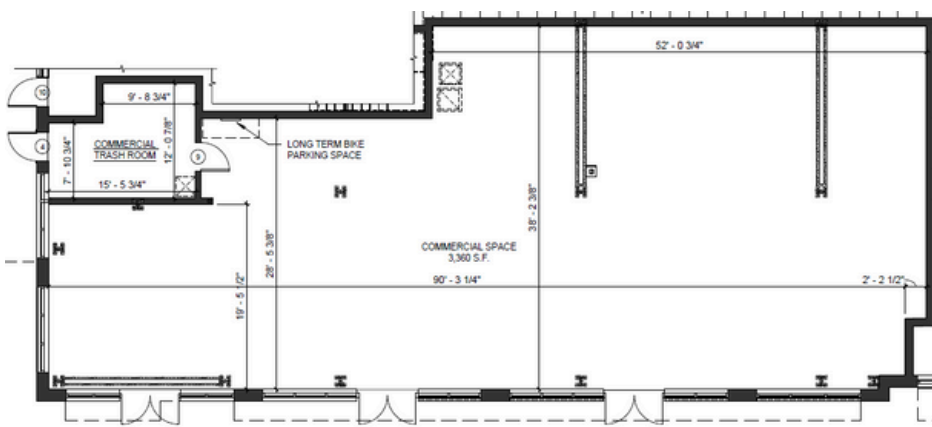
Restaurant Group

Restaurant Renderings



BUILDING/FLOOR PLANS

CORBETT
Restaurant Group



MEDFORD STREET



Partial Medford St. Elevation

Partial Warren St. Elevation

CONTACT US



KRISTA KRANYAK

617.388.8324

KK@CORBETTRESTAURANTGROUP.COM

BRONWYN WIECHMANN

617.955.8836

BRONWYN@CORBETTBRANDS.COM